

## INFISSI FENESTRATION LLP

20th Milestone, opp. Y.M.C.A College,  
Main Mathura Road, Faridabad, Haryana-121005  
Board Line: +91-129-4003130

🌐 [www.infissi.in](http://www.infissi.in) ✉ [info@infissi.in](mailto:info@infissi.in)

flagscom.in

# PRODUCT CATALOGUE





## Company Introduction

Infissi Fenestration LLP is a young and vibrant organization with a team of youthful & dynamic leaders.

### VISION

To constantly provide the Indian Fenestration Industry with world class and state-of-the-art architectural hardware and allied products of high quality consistently, on time, every time.

### MISSION

To become the most preferred company for supplying Architectural Hardware and related products to the uPVC doors and windows fabrication industry.

### Characteristics and Traits:

- ◆ We endeavor to provide the best quality products at the right price, on time, every time
- ◆ Forward looking and customer centric approach for a win-win scenario
- ◆ Constant focus on market dynamics and changing customer needs with quick response to ensure a short turn around time
- ◆ Stringent quality checks at critical points to ensure quality consistency
- ◆ Willingness to go the extra mile for building, nurturing and maintaining a long term and mutually beneficial business relationship

### Our Products:

- ◆ Architectural Hardware for Sliding and Casement uPVC doors and windows
- ◆ Roll Formed Steel Profiles for Sliding and Casement uPVC doors and windows





# CONTENTS



## uPVC Hardware

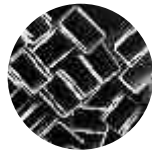
<b>(1) Casement Doors &amp; Windows</b>	01
(i) Handles	02
(ii) Espagnolettes	05
(iii) Hinges	07



<b>(2) Sliding Doors &amp; Windows</b>	11
(i) Handles	12
(ii) Espagnolettes	13
(iii) Rollers	15



<b>(3) Accessories</b>	17
------------------------	----

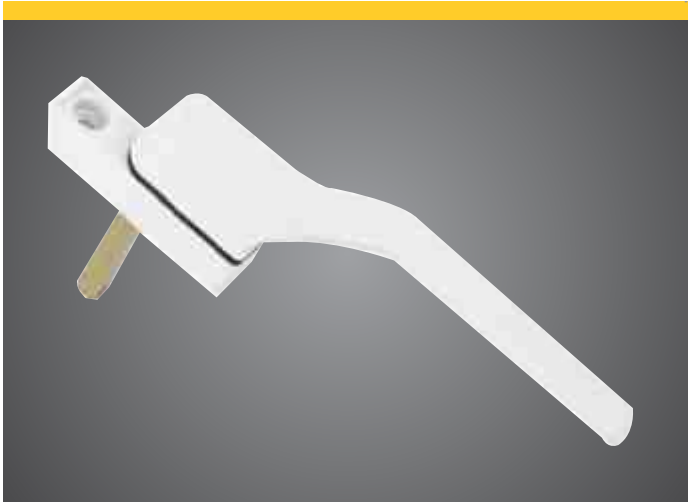


<b>Roll Formed Steel Profiles</b>	19
-----------------------------------	----

## CASEMENT DOORS & WINDOWS

- Casement doors and windows open outward or inward and sideways or along the vertical planes (Top Hung / Tilt In). These doors can be single sash or double sash (French doors/Patio doors)
- Side Hung windows can be both single sash or double sash. The double sash windows either have fixed central member (Mullion) or have a floating Mullion as in French windows
- Infissi supplies robust and stylish 3D Hinges for Casement doors and windows
- Infissi supplies, durable and long lasting self-balancing Friction Hinges for Casement Windows, which also double as wind retaining stays. Additionally, Butt Hinges are also available
- Infissi supplies multi-point locking system for high security features in Casement doors and windows
- Stylish and ergonomically designed handles from Infissi enhances the overall aesthetics and lends a character to your home
- Casement doors and windows provide good acoustic and heat insulation and also protects your home from dust and rain water
- Additionally, multi-point locking gives superior sealing against weather and dust

### CASEMENT HANDLES

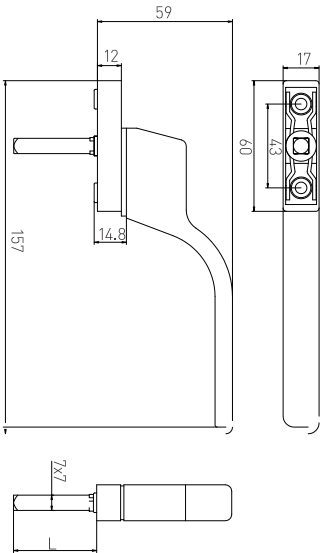


Code	Colour	Material
IF-CH-AL-W01		Aluminium
Code	Colour	Material
IF-CH-ZN-W01		ZAMAC

#### Product Detail:

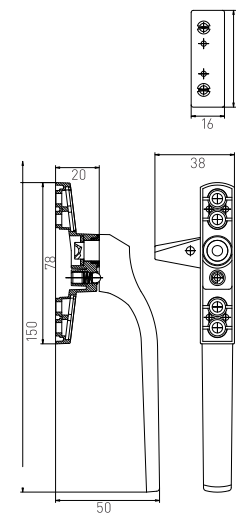
- ♦ Unique design feature with edge-to-edge screw cover cap for enhanced aesthetics
- ♦ Internal 90° stop to prevent Espag gearbox stressing
- ♦ Zinc Handles with coating thickness of up to 70 microns
- ♦ Manufactured from high performance Aluminium and Zinc alloy
- ♦ Aluminium handles with coating thickness of up to 85 microns
- ♦ Tested for 25,000 cycles of operation
- ♦ Ergonomic in-line lever for optimum comfort when in use

### Casement Window Handle





## Single Point Locking Handle (Cockspur Handle)



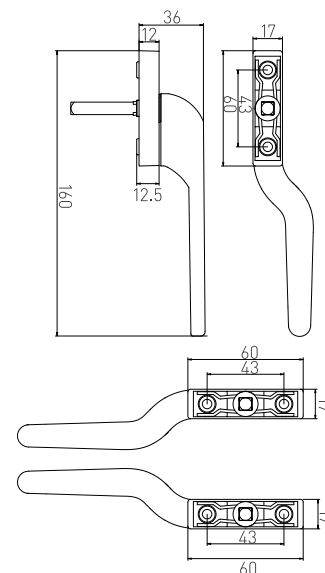
Code	Colour	Material
IF-CK-AL-W01R/ IF-CK-AL-W01L		Aluminium

### Product Detail:

- ◆ Unique design feature with edge-to-edge screw cover cap for enhanced aesthetics
- ◆ Available in both right hand and left hand orientation
- ◆ Aluminium handles with coating thickness of up to 85 microns
- ◆ Tested for 15,000 cycles of operation
- ◆ Ergonomic in-line lever for optimum comfort when in use



## Short-Neck Cranked Handle



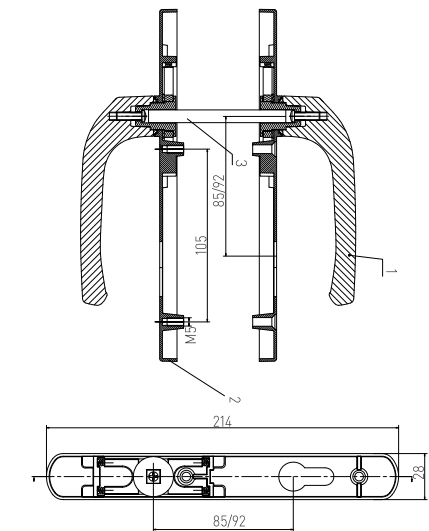
Code	Colour	Material
IF-SNH-AL-W01R/ IF-SNH-AL-W01L		Aluminium

### Product Detail:

- ◆ Unique design feature with edge-to-edge screw cover cap for enhanced aesthetics
- ◆ Available in left hand and right hand orientation
- ◆ Internal 90° stop to prevent Espag gearbox stressing
- ◆ Aluminium handles with coating thickness of up to 85 microns
- ◆ Tested for 25,000 cycles of operation
- ◆ Ergonomic in-line lever for optimum comfort when in use



## Casement Door Handle



Code	Colour	Material
IF-LH-ZN-W01		ZAMAC

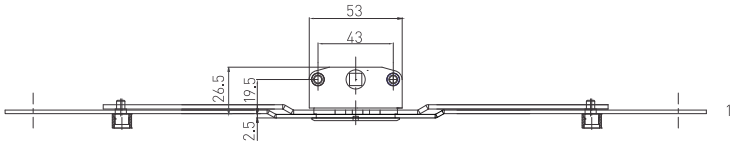
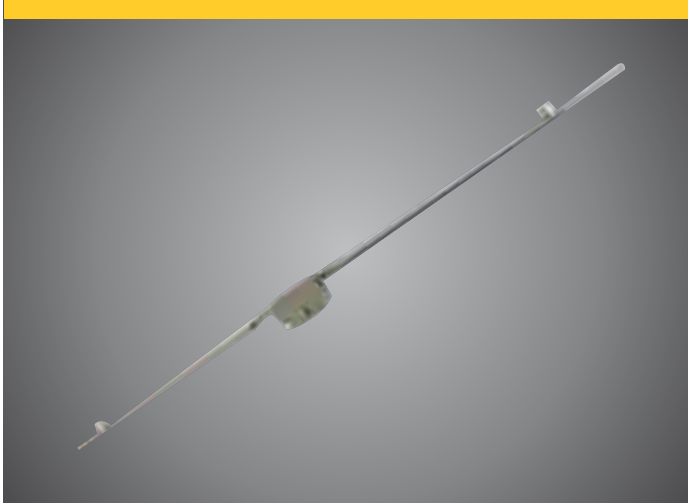
### Product Detail:

- ◆ Unique design feature with edge-to-edge screw cover cap for enhanced aesthetics
- ◆ Internal 90° stop to prevent Espag gearbox over stressing
- ◆ Manufactured from high performance Aluminium and Zinc alloy
- ◆ Ergonomic in-line lever for optimum comfort when in use

“ Infissi supplies ergonomically designed and aesthetically appealing Casement door and window handles that lends a character to your home, simultaneously giving you a long and trouble-free service. ”



### Casement Espagnolette



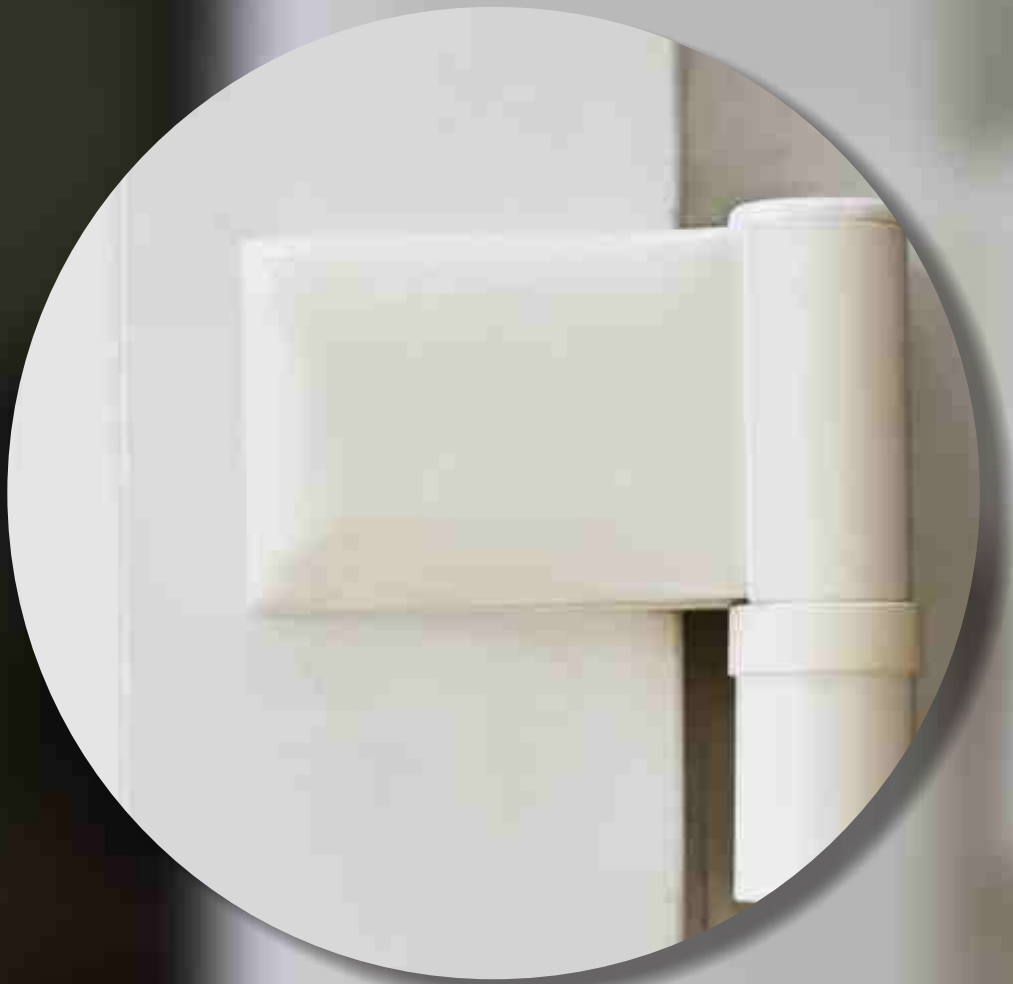
Code	Description	Back Set	Handle Pl
IF-CWE-20BS-800	800/20mm Simple Casement Espagnolette	20mm	Centred Handle
IF-CWE-20BS-1000	1000/20mm Simple Casement Espagnolette	20mm	Centred Handle
IF-CE-20BS-1800	1800/20mm Simple Casement Espagnolette	20mm	Centred Handle

**Product Detail:**

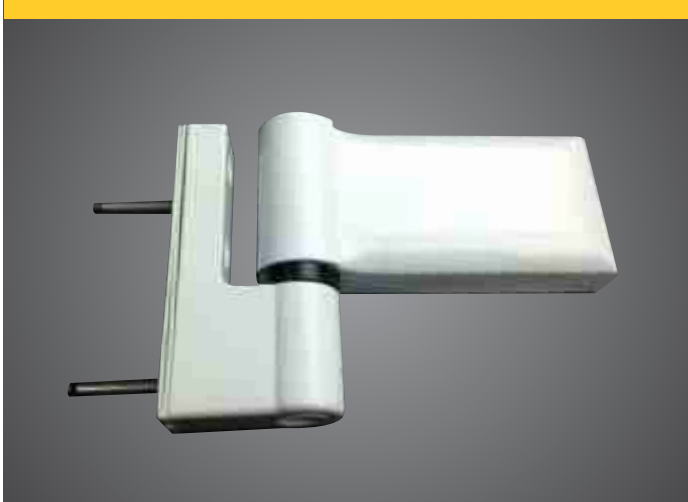
- ◆ Espagnolette or Espag can be used for multiple profiles without fault owing to its different Espag axis options
  - ◆ Maximum resistance against corrosion with superior coating technology
- ◆ Coating Thickness up to 10 microns
  - ◆ Confirm to Grade 5 for Corrosion Resistance ( > 480 hours of Salt Spray test)
  - ◆ Manufactured from high performance Aluminium and Zinc Alloy

“ Infissi Espagnolettes with their multi-point locking features make your homes dust and weather proof, simultaneously providing high security and safety features to protect your loved ones. ”

CASEMENT ESPAGNOLETTES

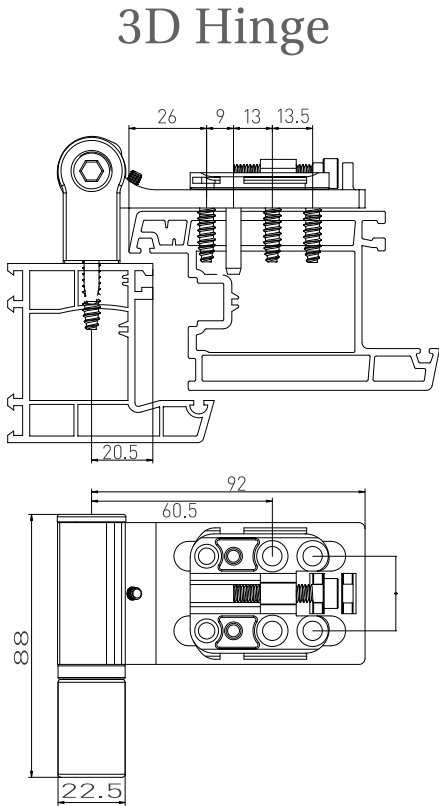


HINGES



Code	Colour	Load Capacity
IF-3DH-W01	<div> <div>RAL 9016</div> <div>RAL 9003</div> </div>	120 Kgs per pair

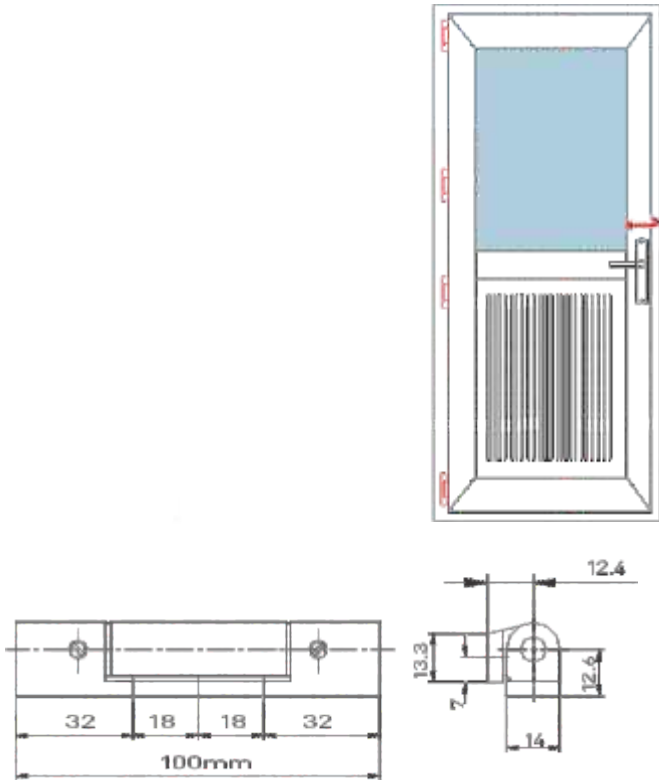
- Product Detail:**
- ♦ A pair of 3D Hinges can easily carry loads of up to 120 Kgs
  - ♦ Surface coating is done with Electrostatic Powder Paint with superior coating technology
  - ♦ Coating thickness of up to 100 microns

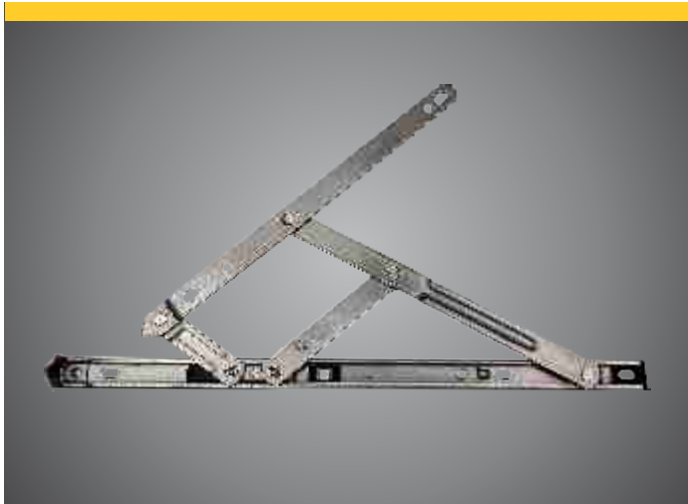


Code	Usage Range	Colour	Load Capacity
IF-BH100	Min210mm Max2100mm	<div> <div>RAL 9016</div> <div>RAL 9003</div> </div>	80 Kgs per pair

- Product Detail:**
- ♦ A pair of Butt Hinges can easily carry loads of up to 80 Kgs
  - ♦ Surface coating is done with Electrostatic Powder Paint with superior coating technology
  - ♦ Coating thickness of up to 95 microns

Butt Hinge Outward 100mm





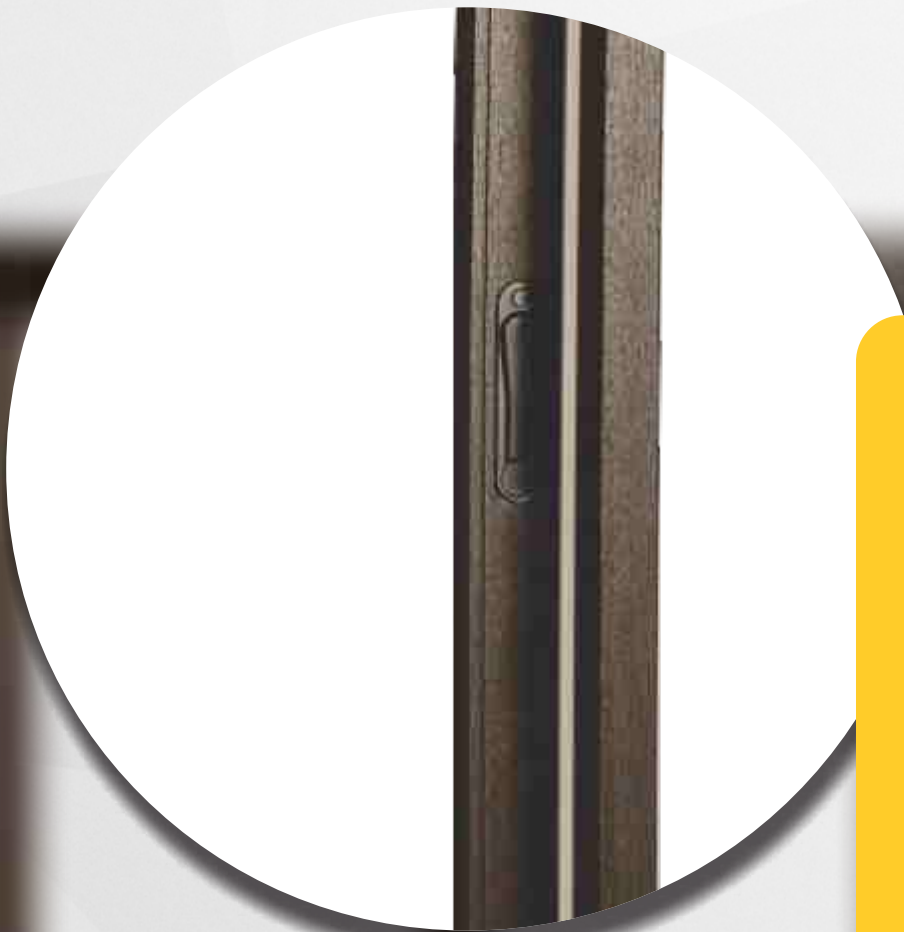
## Friction Hinge

- Product Detail:**
- ◆ Made of Super Ferritic Stainless Steel for long life
  - ◆ Durable and reliable design
  - ◆ Adjustable positioning
  - ◆ Optional sizes and stack heights
  - ◆ Easy to use
  - ◆ Initial egress opening in one operation
  - ◆ No depressing of buttons

Code	Length	Material	Stack Height (mm)	Max Vent Width (mm)	Max Vent Height (mm)	Capacity (kg)	Opening Angle (°)	Bar Thickness (mm)
IF-FS-10-16-SS-2	10	SS 304	16	450	800	15	45 - 88	2
IF-FS-10-16-SS-2.5	10	SS 304	16	450	800	20	45 - 88	2.5
IF-FS-12-16-SS-2	12	SS 304	16	450	800	18	45 - 88	2
IF-FS-12-16-SS-2.5	12	SS 304	16	450	800	20	45 - 88	2.5
IF-FS-16-16-SS-2	16	SS 304	16	650	800	22	45 - 88	2
IF-FS-16-16-SS-2.5	16	SS 304	16	650	800	25	45 - 88	2.5
IF-FS-12-13-SS-2	12	SS 304	13	450	800	15	88	2
IF-FS-16-13-SS-2	16	SS 304	13	650	800	21	88	2

“ Infissi supplies durable, corrosion free and long lasting self balancing friction Hinges of SS 304 for Casement doors & windows that are easy to operate and maintain. ”





SLIDING HANDLE

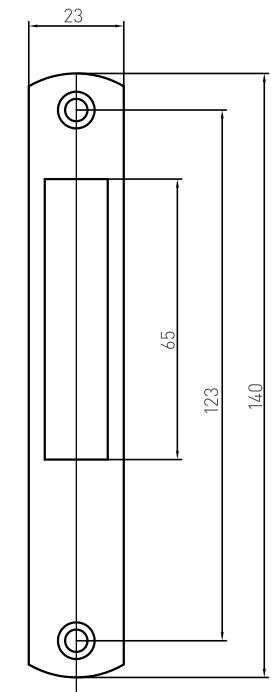
## SLIDING DOORS & WINDOWS

- Sliding doors and windows have 2, 3 or 4 Tracks complete with 2, 3, 4 or 6 horizontally Sliding sashes carrying glass panes and also insect screens
- Infissi Steel Rollers support sashes of Sliding doors and windows for quieter, smoother and easier operation
- Infissi provides both single and multi-point locking system for Sliding doors and windows in a range of sizes
- Infissi handles are stylishly and ergonomically designed, to lend an aesthetic appeal to your home



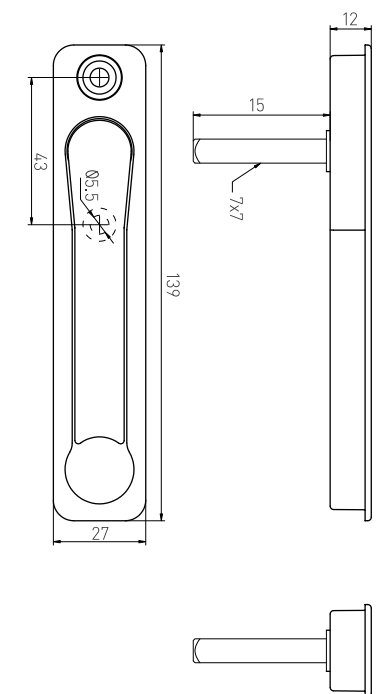
Code	Colour	Material	Coating Thickness
IF-TL-AL-W01R/ IF-TL-AL-W01L	<div> <div>RAL 9016</div> <div>RAL 8003</div> </div>	Aluminium	70 microns

### Touch Lock



Code	Colour	Material	Coating Thickness
IF-PL-ZN-W01	<div> <div>RAL 9016</div> <div>RAL 8003</div> </div>	ZAMAC	70 microns

### Pop-up Handle

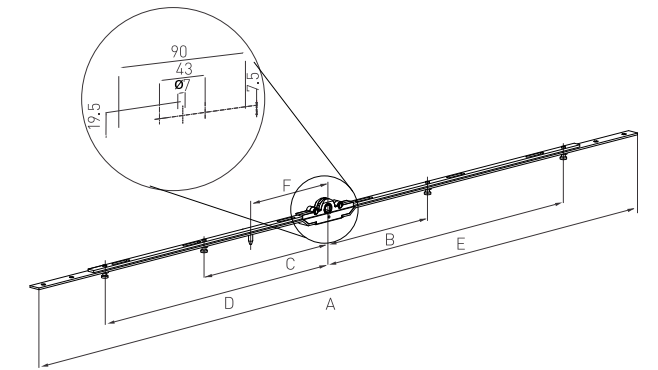




## SLIDING ESPAGNOLETTE



### Sliding Espagnolette



Code	Description	Axis	Handle Pl	Security Level	KA	A	B	C	D	E	F
IF-SE-7.5BS-800	800/7,5mm Simple Sliding Espagnolette	7.5mm	Centred Handle	w/Sliding Pin	800-1000	800	-	-	275	275	106.5
IF-SE-7.5BS-1400	1400/7,5mm Simple Sliding Espagnolette	7.5mm	Centred Handle	w/Sliding Pin	1400-1600	1400	266	266	575	575	166
IF-SE-7.5BS-1800	1800/7,5mm Simple Sliding Espagnolette	7.5mm	Centred Handle	w/Sliding Pin	1800-2000	1800	300	300	775	775	200

Note : Technical detail sizes are millimetric

#### Product Detail:

- ◆ Espagnolette or Espag can be used for multiple profiles without fault owing to its different Espag axis options
- ◆ Maximum resistance against corrosion with superior coating technology
- ◆ Confirm to Grade 5 for Corrosion Resistance > 480 hours of Salt Spray test
- ◆ Coating Thickness up to 10 microns
- ◆ Manufactured from high performance Aluminium and Zinc Alloy

“ Infissi hardware is stylishly and ergonomically designed, to lend an aesthetic appeal to your home. ”





SLIDING ROLLER

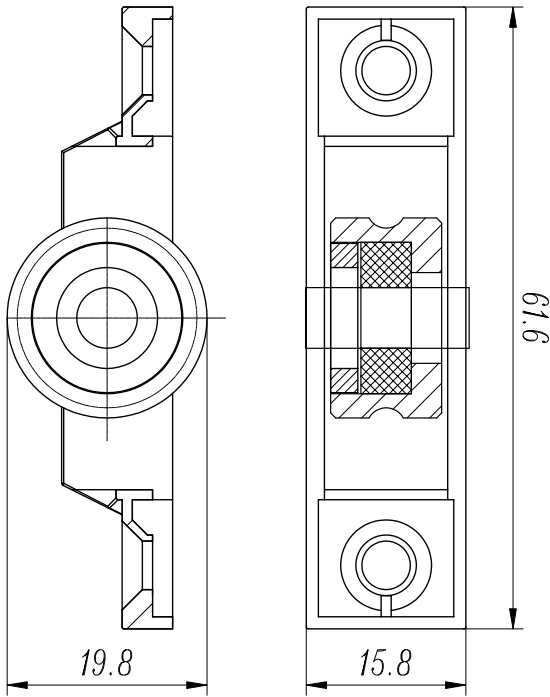


Code	Height	Capacity
IF-DR-01	14 mm	60 kg per pair

**Product Detail:**

- ♦ Maximum resistance against corrosion with superior coating technology
- ♦ Can carry loads of up to 60 kg per pair
- ♦ Confirm to Grade 5 for corrosion resistance (> 480 hours of Salt Spray test)

Single Roller

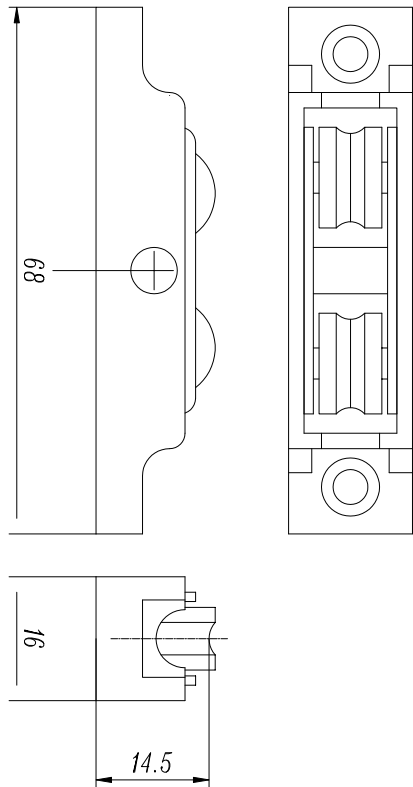


Code	Height	Capacity
IF-DSR-01	17.5 mm	90 kg per pair

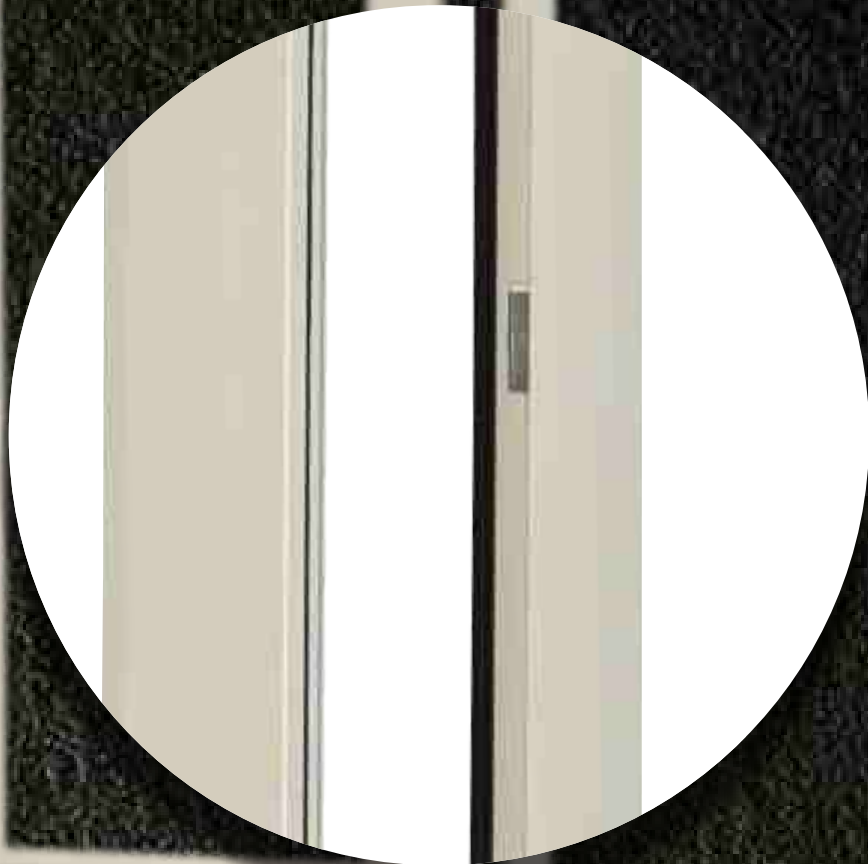
**Product Detail:**

- ♦ Maximum resistance against corrosion with superior coating technology
- ♦ Can carry loads of up to 90 kg per pair
- ♦ Confirm to Grade 5 for corrosion resistance (> 480 hours of Salt Spray test)

Double Roller







## ACCESSORIES



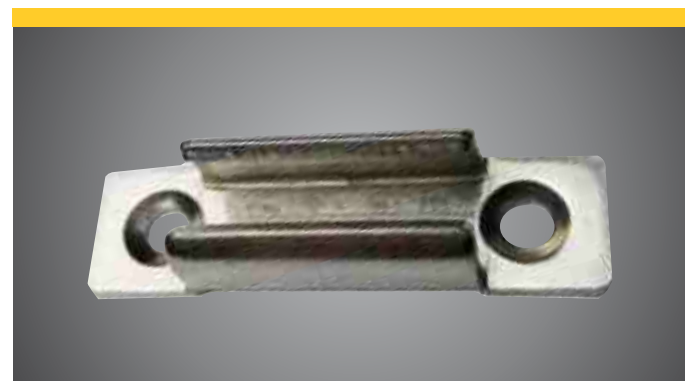
Code	Material
IF-ST-ZN-CD01	ZAMAC

**Product Detail:**

- ◆ Confirm to Grade 5 for Corrosion Resistance ( > 480 hours of Salt Spray test)



Code	Length
IF-SB01	196 mm

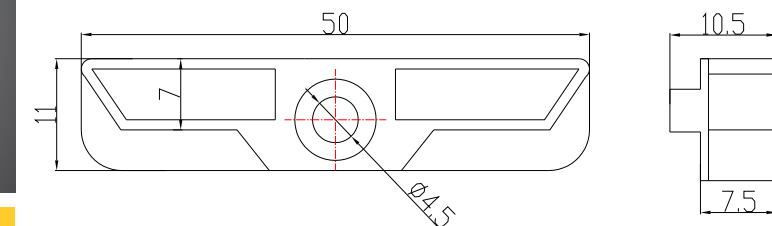


Code	Material
IF-ST-SS-SD01	Stainless Steel

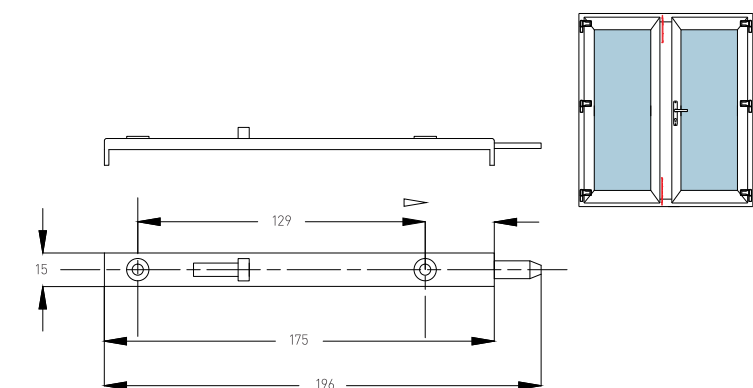
**Product Detail:**

- ◆ Confirm to Grade 5 for Corrosion Resistance ( > 480 hours of Salt Spray test)

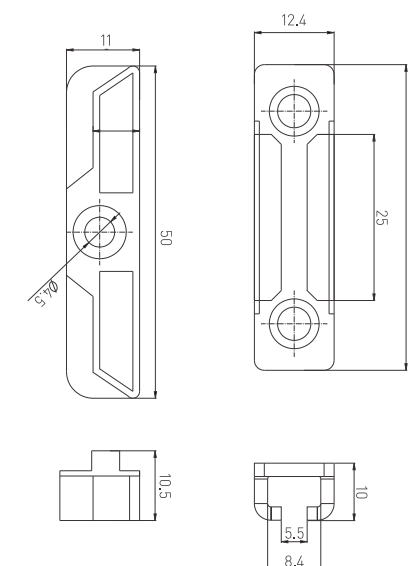
### Striker



### Double Sash Bolt with Striker



### Sliding Striker



## ROLL FORMED STEEL PROFILES

### Roll Formed Steel Profiles

- Infissi manufactures Roll Formed Steel Profiles for reinforcing uPVC doors and windows
- Roll Formed Steel Profiles are available from 1 mm to 2 mm thickness
- A variety of section shapes are available including L, U, C and Box sections and a number of other special shapes
- Thanks to a huge installed Rolling Capacity of 30,000 MTPA and a customer - centric approach, Infissi is able to offer very short or minimal delivery periods
- Infissi stocks a large variety of commonly used Roll Formed Steel Profiles and products moving on a regular basis and may also be available ex-stock



## Benefits of Automated Cold Roll Forming



It is extremely accurate



It gives consistent shapes



Versatility with high standards in terms of quality, reliability and precision



Saves time. Keeps your production process going



Improves stress distribution in metal



Easily transforms material into required profile section, shape and size

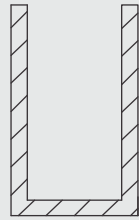
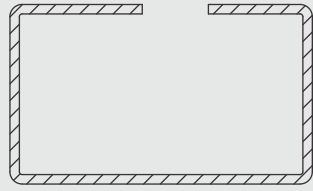


Is highly cost effective

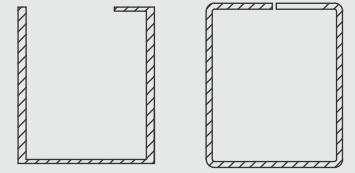
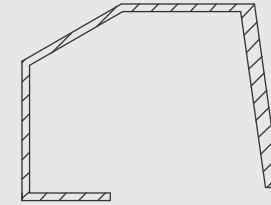




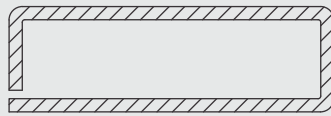
**REHAU**



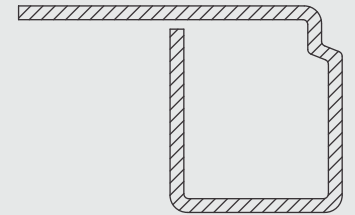
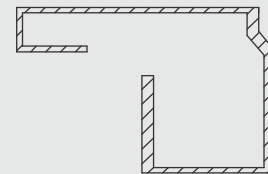
**LESSO**



**KOMMERLING**



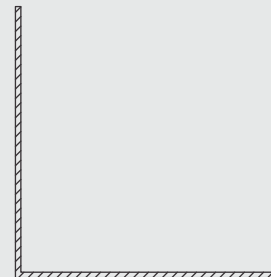
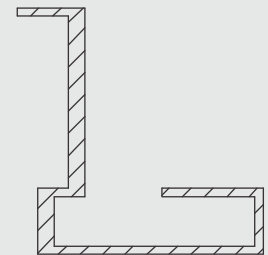
**ENCRAFT**



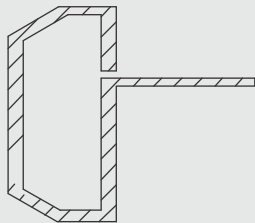
**DECEUNINCK**



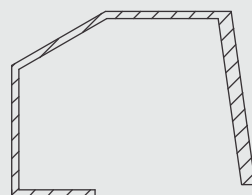
**VEKA**



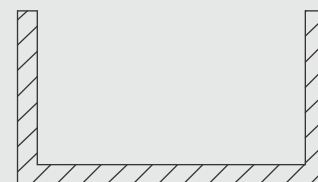
**LG HAUSYS**



**ALUPLAST**



**NCL WINTech**





## How To Order

It is quick and simple to place your order with us.



Call us: +91-129-4003130



Email us: [info@infissi.in](mailto:info@infissi.in)



This catalogue is available for download as a pdf from our website. Please visit [www.infissi.in](http://www.infissi.in) and click on Download Catalogue

We reserve the right to alter specifications and descriptions without prior notice as part of our policy of continuous development. E&OE.

**infissi**  
PERFECTION TO THE EDGE